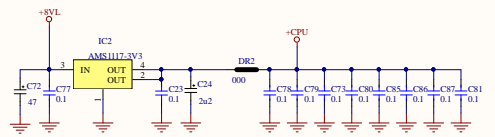
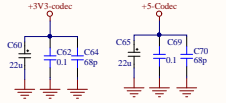
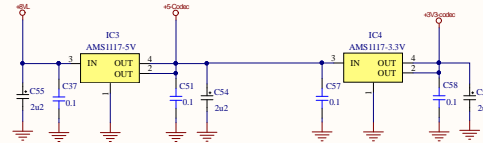
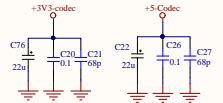
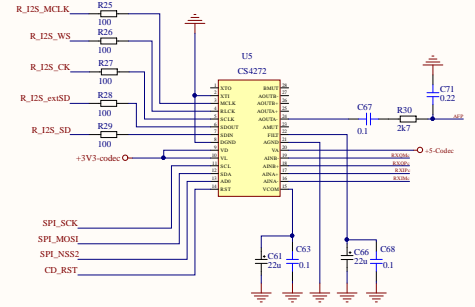
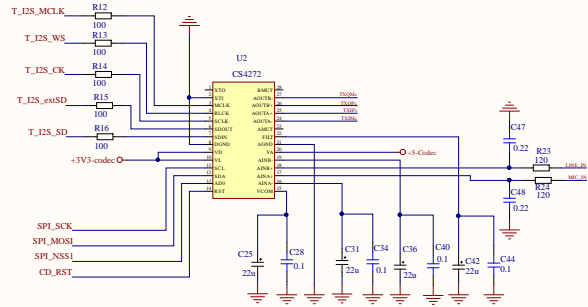
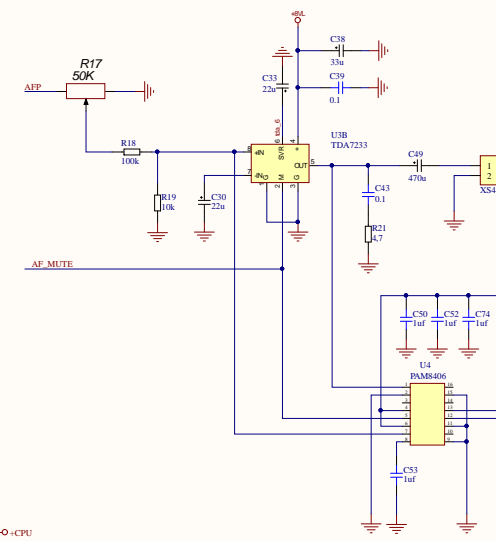




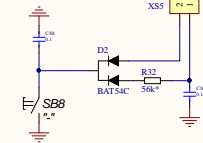
Контакт	Цепь
1	+CPU
2	LCD_CS
3	LCD_RST
4	LCD_DC
5	SPI_MOSI
6	SPI_MISO
7	SPI_SCK
8	SPI_MISO
9	SPI_MISO
10	SPI_MISO
11	SPI_MISO
12	SPI_MISO
13	SPI_MISO
14	SPI_MISO



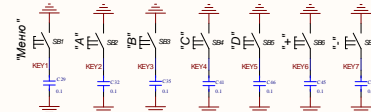
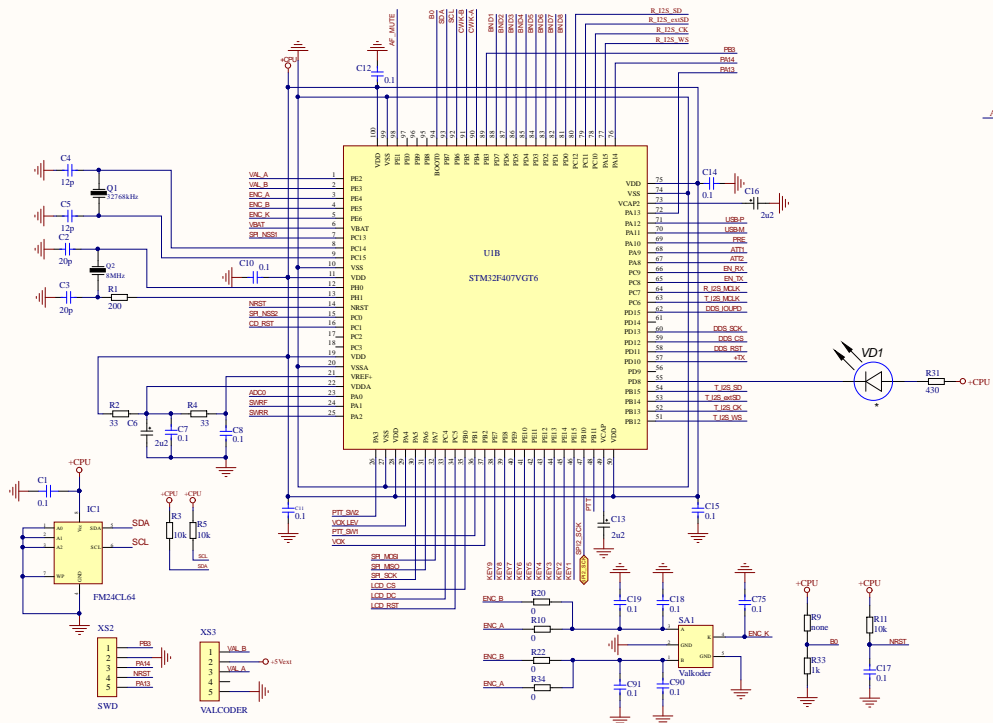
Контакт	Цепь
1	DDS_SCK
2	DDS_I2S_OUT
3	VOX_LEV
4	VOX
5	RXIPc
6	SWRR
7	RXQPc
8	SWRF
9	TXIMc
10	RXIMc
11	TXQPc
12	TXIPc
13	LINE_IN
14	TXQMc
15	MIC_IN
16	RXQMc
17	CWK-A
18	CWK-B
19	8V
20	12V



На выбор один из двух, но на основной плате должна быть ответная часть



Контакт	Цепь
1	BND1
2	BND2
3	BND3
4	BND4
5	BND5
6	BND6
7	BND8
8	BND7
9	USB-P
10	PRE
11	USB-M
12	GND
13	ATT1
14	TX
15	ATT2
16	PTT
17	EN_RX
18	PTT_SW2
19	EN_TX
20	PTT_SW1



Boards